

EXPERIENCE THE
**VARIETY OF
SOUNDS**
OF OUR DOORBELLS

GROTHE
URMET|GROUP

CALIMA

Mobile, versatile, hybrid, customised.



Radio transmitter SE03
(white)

The radio transmitter SE03 (white) is included in CALIMA sets.



CALIMA 400



CALIMA 600/800

The right doorbell for individual requirements.

CALIMA is the doorbell series developed for the **individual requirements** of everyday modern life.

With **practical functions**, the doorbells of the CALIMA series can be tailored to meet your needs.

In addition, each CALIMA features **special highlights**, such as a nightlight or the capability to stream music.



CALIMA 200

CALIMA 50/100

Flexible: Interference-free wireless connection with a range of up to 500 metres. Satisfies current radio equipment directive RED2014/53/EU.

Menu with voice message: Simple management through clear menu structure, speech announcement and two discreet buttons.

Differentiation between multiple calls: Directly signals the door at which the doorbell was rung.

Coloured LED ring: Also provides visual indication that a visitor is at the door. Freely select the colour and light type.

Mute function and snooze function: For the times you'd like to have quiet in the house.

Overview of the series



CALIMA 50

CALIMA 50 – The wired model

HIGHLIGHTS

- Electronic doorbell with the functions of the CALIMA series
- Doorbell and doorbell button are connected with wires
- Wall-mounting
- Without LED light ring
- Power supplied by battery or transformer
- Diameter 105 mm, depth 43 mm

Article 43690 (DE), 43691 (GB), 43692 (FR), 43693 (NL), 43694 (BE), 43697 (CH)



CALIMA 100

CALIMA 100 – The hybrid model

HIGHLIGHTS

- Can be operated as a wireless or as an electronic doorbell
- Wall-mounting
- Without LED light ring
- Power supplied by battery or transformer
- Diameter 105 mm, depth 43 mm

Article 43680 (DE), 43681 (GB), 43682 (FR), 43683 (NL), 43684 (BE), 43687 (CH)



CALIMA 200

CALIMA 200 – The mobile model

HIGHLIGHTS

- Small and portable
- Practical, small wireless doorbell with all functions of the CALIMA series
- Diameter 65 mm, height 100 mm

Article 43560 (DE), 43561 (GB), 43563 (NL), 43564 (BE), 43565 (IT), 43567 (CH)



CALIMA 400

CALIMA 400 – The plug-in model

HIGHLIGHTS

- LED light ring with nightlight function
- Power supplied via power socket
- Diameter 65 mm, height 100 mm

Article 43600 (DE), 43601 (GB), 43602 (FR), 43603 (NL), 43604 (BE), 43605 (IT), 43607 (CH)



CALIMA 600

CALIMA 600 – The custom model

HIGHLIGHTS

- In addition to the preinstalled ring tones, MP3 melodies can also be set as the ring tone via microSD card
- Power supplied by batteries or table adapter (with TA55)
- Diameter 85 mm, height 140 mm

Article 43570 (DE), 43571 (GB), 43572 (FR), 43573 (NL), 43574 (BE), 43575 (IT), 43577 (CH)



CALIMA 800

CALIMA 800 – The Bluetooth® model

HIGHLIGHTS

- Pair with smartphone using Bluetooth®
- Stream music
- Slot for microSD card (for additional MP3 ring tones)
- Music is interrupted if doorbell is pressed
- Up to 8 hours of battery life
- Table adapter for charging included
- Diameter 85 mm, height 140 mm

Article 43580 (DE), 43581 (GB), 43582 (FR), 43583 (NL), 43584 (BE), 43585 (IT), 43587 (CH)

FLUSH-MOUNTED WIRELESS DOORBELL



UP-FG 230ws

Set includes MISTRAL SE03 radio transmitter (white)
Artikel 43740 (D), 43741 (GB),
43742 (FR), 43743 (NL), 43744 (BE),
43747 (CH)

- For 55 x 55 mm switch ranges from well-known manufacturers
- Quartz-stabilized range of 500 m
- 15 Polyphonic melodies with adjustable volume
- 1-button operation with voice announcement
- Ready for use in the set – coupled with radio transmitter ex works
- Extremely simple pairing of additional wireless doorbell buttons or wireless doorbells
- Snooze function
- Satisfies current radio equipment directive RED2014/53/EU

ELECTRONIC DOORBELLS

- For 50 x 50 mm switch ranges from well-known manufacturers
- 17 Polyphonic melodies with adjustable volume
- Dual call differentiation • Mounting plate and frame included



UP-GONG 120ws
Artikel 43701



UP-GONG 230ws
Artikel 43706

FLUSH-MOUNTED

BELLS

- For 50 x 50 mm switch ranges from well-known manufacturers
- Adjustable volume max. 80dB(A)
- Mounting plate and frame included



UP-LTW 120ws
Artikel 43711



UP-LTW 230ws
Artikel 43716

BUZZERS

- For 50 x 50 mm switch ranges from well-known manufacturers
- Adjustable volume max. 80dB(A)
- Mounting plate and frame included



UP-SU 120ws
Artikel 43721



UP-SU 230ws
Artikel 43726

((ECHO))

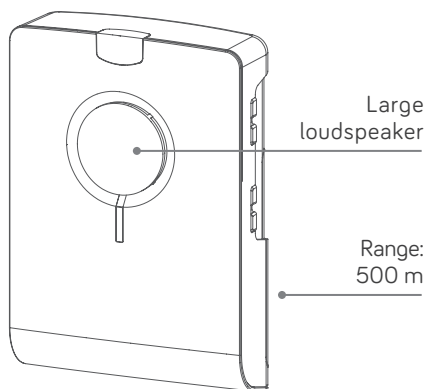
The hi-fi doorbell that can play your own sounds.



ECHO M ws
Article 43502

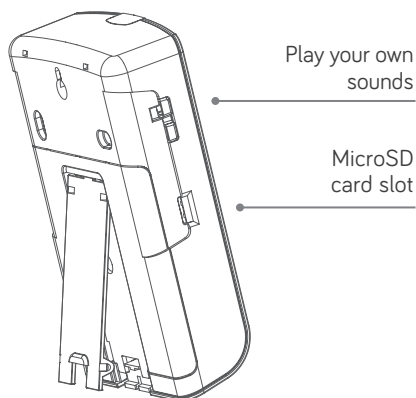


ECHO M sw
Article 43501



HIGHLIGHTS

- Individual ring tones can be played
- Superb sound
- Bright LED flash
- Differentiation between multiple calls
- Attractive design
- High-gloss finish
- Software included
- Satisfies current radio equipment directive RED2014/53/EU



ECHO Set with radio transmitter



ECHO M ws
Article 43502



ECHO M sw
Article 43501

ECHO Set with motion detector



ECHO BM ws
Article 43516



ECHO BM sw
Article 43515

ECHO single devices



ECHO 120 ws
Article 43531



ECHO 120 sw
Article 43530

(Battery operation or 8-12 V AC/DC)

ECHO 230 ws
Article 43541

ECHO 230 sw
Article 43540

(230 V AC oder 8-12 V AC/DC)

MISTRAL

The radio chime with top range



HIGHLIGHTS

- 500-m range
- 13 polyphonic melodies
- Combination with existing bell buttons possible*
- LED flashing light*
- Differentiation between multiple calls
- Waterproof radio transmitter (IP54)
- Long battery life
- Battery adapter included*
- Wide range of accessories available
- Satisfies current radio equipment directive RED2014/53/EU

*depending on model

MISTRAL WIRELESS DOORBELL SETS

The MISTRAL 200M and 300M wireless doorbells are available in six colour variants:



MISTRAL 200M
Article 43305



WHITE
MISTRAL 200M ws
Article 43182
MISTRAL 300M ws
Article 43142



BLACK
MISTRAL 200M sw
Article 43183
MISTRAL 300M sw
Article 43143



SILVER
MISTRAL 200M si
Article 43184
MISTRAL 300M si
Article 43144



MISTRAL 300M
Article 43300



RED
MISTRAL 200M rt
Article 43185
MISTRAL 300M rt
Article 43145



GREEN
MISTRAL 200M gn
Article 43186
MISTRAL 300M gn
Article 43146



WHITE/SILVER
MISTRAL 300M ws-si
Article 43372

MORE VARIANTS



MISTRAL 300M BM
with motion detector
Article 43315



MISTRAL 400M
Wireless plug-in doorbell set
Article 43310



MISTRAL 210M
Wireless doorbell set
Article 43303

MISTRAL 600

The customisable doorbell for self-expression: Simply use the supplied motifs or your own photos.



MISTRAL 600
Artikel 43400

MISTRAL 600E ws
Artikel 43411

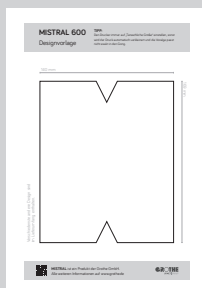
HIGHLIGHTS

- 500-m range
- 16 polyphonic melodies
- Combination with existing bell buttons possible
- Two integrated LED flashes
- Differentiation between 16 calls
- Waterproof radio transmitter (IP54)
- Long battery life
- Battery adapter included
- Wide range of accessories available
- Satisfies current radio equipment directive RED2014/53/EU



With 12 interchangeable motifs

You can find a template for your own motifs on our website.



MISTRAL 650 und 350

The classically elegant radio chime sets: Modern design for the popular MISTRAL radio chimes.



HIGHLIGHTS

- 500-m range
- 12 polyphonic ringtones
- Combination with existing bell buttons possible*
- Bright LED flash
- Differentiation between multiple calls
- Waterproof radio transmitter (IP54)
- Long battery life
- Wide range of accessories available
- Satisfies current radio equipment directive RED2014/53/EU

*depending on model

FOUR SET VARIANTS



MISTRAL 650 WS
Artikel 43553
Radio chime sets



MISTRAL 650 SW
Artikel 43552
Radio chime sets



MISTRAL 350 WS
Artikel 43551
Radio chime sets



MISTRAL 350 SW
Artikel 43550
Radio chime sets

CROMA

With various colours, designs and melodies, CROMA provides many opportunities for customisation.



HIGHLIGHTS

- Multi-volt operation (8-12 V AC/DC, 230 V AC or Battery)*
- Polyphonic ringtones*
- Differentiation between multiple calls
- Snooze function*
- Long battery life*

*depending on model



CROMA 150 WS
Article 43555



CROMA 150 SW
Article 43554



CROMA 250 WS
Article 43557



CROMA 250 SW
Article 43556



CROMA 100A
Article 43170



CROMA 100A ws/ws
Article 43172
CROMA 231A ws/ws
Article 43195



CROMA 100A ws/si
Article 43173
CROMA 231A ws/si
Article 43196



CROMA 100A ws/sw
Article 43174
CROMA 231A ws/sw
Article 43197



CROMA 231A
Article 43177



CROMA 230A
Article 43175



CROMA 300
Acrylic front
aluminium/white
Article 43190



GONG 225 A
Article 43225

COLOUR OPTIONS CROMA 50



CROMA 50
Article 43150



WHITE
CROMA 50 sw
Article 43152



BLACK
CROMA 50 sw
Article 43153



SILVER
CROMA 50 si
Article 43154



RED
CROMA 50 rt
Article 43155



GREEN
CROMA 50 gn
Article 43156

Electronic doorbells with **real wood veneer**



Oak
warm and robust with
a distinctive grain



Cherry
vibrant, elegant and
with a rich grain



Walnut
luxurious and with a
fine, even grain

GROTHE

CROMA in wood look: Our elongated electronic chime is now available in oak, cherry and walnut. The warm nuances and natural textures create an inviting atmosphere.



**Electronic chime CROMA 100A
Real oak veneer**

CROMA 100A ws/ei • Article 43782

**Electronic chime CROMA 231A
Real oak veneer**

CROMA 231A ws/ei • Article 43802



**Electronic chime CROMA 100A
Real cherry veneer**

CROMA 100A ws/ki • Article 43781

**Electronic chime CROMA 231A
Real cherry veneer**

CROMA 231A ws/ki • Article 43801



**Electronic chime CROMA 100A
Real walnut veneer**

CROMA 100A ws/wa • Article 43783

**Electronic chime CROMA 231A
Real walnut veneer**

CROMA 231A ws/wa • Article 43803

ELECTROMECHANICAL

Robust and impossible to ignore.



- Sound bars made of real bell steel
- Rich, duo-tone sound
- Battery, transformer or 230 volt AC operation possible*

*depending on model

OUR VERSIONS



GONG 169A TRw
Article 44172



GONG 169 Bw
Article 44169

GONG 169 DKw
Article 44171



GONG 569 Bw
Article 44569



GONG 569-230 V
Article 44179



**GONG 465A
Bw/sw**
Article 44465

**GONG 465A-230
ws/sw**
Article 44475



**GONG 465A
Bw/w**
Article 44466

**GONG 465A-230
ws/ws**
Article 44476

More variants,
gongs 465 with
motifs and
Quadros in wood
look can be found
on the following
pages and on our
website.



GONG 265 Bw
Article 44265



GONG 165 Bw
Article 44165



GONG 065 Bw
Article 44065

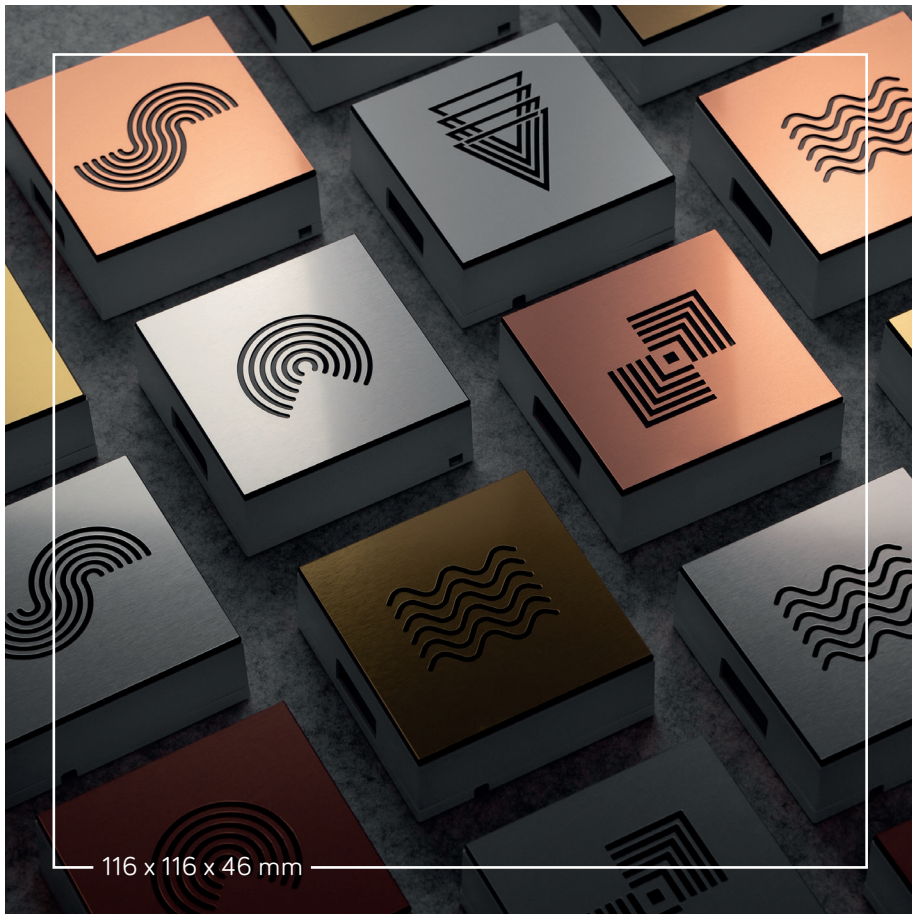


GONG 665 Bw/bl
Article 44665



GONG 565 Bw/sim
Article 44565

TWO-TONE DOORBELL GONG 465A



116 x 116 x 46 mm

A HIGH-QUALITY FINISH FOR YOUR HOME.

Five Designs


















Each Design in Stainless-steel, Brass and Copper look.

www.grothe.de

ELECTROMECHANICAL TWO-TONE DOORBELL

- Clear, rich tone (real bell steel) • High-quality stainless-steel, brass and copper look with linear patterns
- Maximum volume: 80 dB(A) • Can be powered by batteries
- Power supply: 9 V PP3 battery • External power supply: 8–12 V AC (12 VA) • Short-term operation: 5 / 15 s • Dimensions: 116 x 116 x 46 mm

STAINLESS-STEEL LOOK	BRASS LOOK	COPPER LOOK	+
 <p>GONG 465A Bw/va-p Article 46001</p>	 <p>GONG 465A Bw/me-p Article 46021</p>	 <p>GONG 465A Bw/ku-p Article 46041</p>	POLYGON
 <p>GONG 465A Bw/va-w Article 46002</p>	 <p>GONG 465A Bw/me-w Article 46022</p>	 <p>GONG 465A Bw/ku-w Article 46042</p>	WAVES
 <p>GONG 465A Bw/va-c Article 46003</p>	 <p>GONG 465A Bw/me-c Article 46023</p>	 <p>GONG 465A Bw/ku-c Article 46043</p>	CURVES
 <p>GONG 465A Bw/va-r Article 46004</p>	 <p>GONG 465A Bw/me-r Article 46024</p>	 <p>GONG 465A Bw/ku-r Article 46044</p>	RETRO
 <p>GONG 465A Bw/va-s Article 46005</p>	 <p>GONG 465A Bw/me-s Article 46025</p>	 <p>GONG 465A Bw/ku-s Article 46045</p>	SOUND

W

Wooden

chimes

QUADRO



Doorbells that offer more than just sound. Our tried-and-tested electronic and electromechanical doorbells not only provide a clear sound, they also act as stylish decor. With their real wood veneer, they are the ideal choice to create a natural and harmonious ambience in your living space. By choosing oak, cherry or walnut, you can adapt the doorbell to perfectly reflect your personal style and interior design.

A true sense of home.



Oak

warm and robust with a distinctive grain



Cherry

vibrant, elegant and with a rich grain



Walnut

luxurious and with a fine, even grain

Carefully selected wood types for a contemporary ambience. These statement pieces bring nature into your home.

Electromechanical two-tone doorbell Quadro 100 BW

- Clear, rich tone (real bell steel)
- Maximum volume: 80 dB(A)
- Can be powered by 9 V block battery
- External power supply: 8-12 V AC (12 VA)
 - Short-term operation: 5/15 s
- Dimensions: 116 x 116 x 46 mm



Quadro 100 Bw/ei • Real oak veneer

Article 46121



Quadro 100 Bw/ki • Real cherry veneer

Article 46101



Quadro 100 Bw/wa • Real walnut veneer

Article 46141

ACCESSORIES

Wireless bellplate ETA Funk

Perfect for retrofitting – from analogue to wireless.



Aluminium in stainless-steel look

- Surface mounting: 43451
- Flush mounting: 43455



Aluminium, smooth

- Surface mounting: 43452
- Flush mounting: 43456



Plastic, matt white

- Surface mounting: 43453
- Flush mounting: 43457



Plastic, matt black

- Surface mounting: 43454
- Flush mounting: 43458

MISTRAL SE03 wireless transmitter – The wireless transmitter with an extremely long range. Can be combined with Grothe wireless chimes.



MISTRAL SE 03
White
Article 43441



MISTRAL SE 03a
Anthracite
Article 43442



MISTRAL SE 03s
Silver lacquered
Article 43440

Mains adapter

Instead of batteries for MISTRAL 600, 300 and transmitters.



NA 9V-GPE
Article 43399

Magnetic contact

Activates a signal on a Grothe wireless doorbell if a door or window is opened.



MISTRAL MK Magnetkontakt
Article 43394

Wireless transmitter, door release relay
 Wireless transmitters are the ideal solution for the modernisation of a doorbell system. Flush-mounted installation. Can be combined with Grothe wireless doorbells.



**Wireless transmitter
 MISTRAL SE06**
 Artikel 43443



**Door release relay
 MISTRAL FTR**
 Artikel 43387

The MISTRAL SE09 enables the connection of up to four conventional bell buttons with up to four residential parties, without limiting the number of Grothe wireless doorbells.



Wireless transmitter MISTRAL SE09 • Art. 43004

MISTRAL Relaisbox switches light, door opener, shutters, etc. if an additional doorbell button is used as „remote control“.



MISTRAL RB Relaisbox • Article 43385

MISTRAL Repeater

500 metres additional wireless range for Grothe wireless doorbell.



MISTRAL WR Repeater • Article 43480



Wireless motion detector

Can be combined with all Grothe wireless doorbells.

MISTRAL BM03
 Article 43445

Mobile wireless receiver

Receiver with belt clip and display of missed door calls.



**MISTRAL 800
 MOBILE SW**
 Article 43380



**MISTRAL 800
 MOBILE WS**
 Article 43381



BASIC PRODUCT MISTRAL SE07 BASIC

- LED function control
- Frequency: 868.35 MHz (fulfils the current radio standard radio standard RED 2014/53/EU)
- Range: 200 m in open field
- Power supply: 3 V lithium battery
- Operating temperature: -15 °C to 50 °C
- Protection class IP67, suitable for indoor and outdoor use
- Dimensions: 45 x 45 x 20 mm, Installation depth 18 mm, M40 lock nut



Up to
15 years
long-life,
waterproof
battery

LIBERTY FOR YOUR DESIGN

The MISTRAL SE07 basic product offers unlimited possibilities: With its flexible mounting options on various surfaces, it gives you the freedom to design your doorbell system exactly as you want it. Whether on wood, metal or plastic - with the SE07 you can give free rein to your creativity and embellish your façade according to your personal style.

Benefit from the simple installation and experience the joy of DIY with the MISTRAL SE07!



**MISTRAL SE07
B AP WS**
Article 43447

**MISTRAL SE07
B AP SW**
Article 43827

SURFACE-MOUNTED WIRELESS TRANSMITTER

Perfect for narrow door frames in older houses or for retrofitting existing doorbell systems.

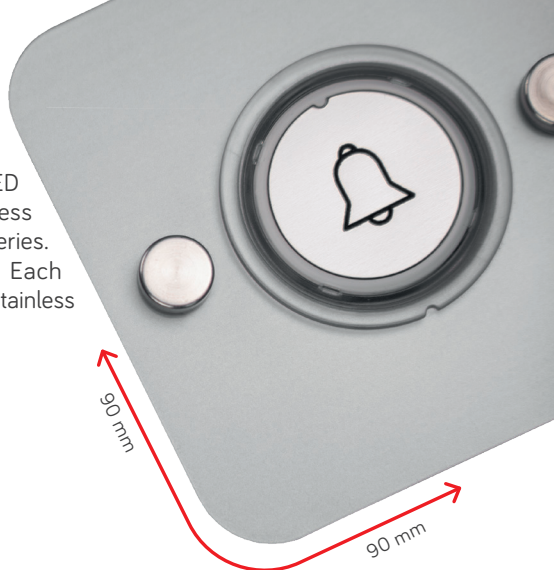


**MODERNISING
WITH GROTHE**

WIRELESS TRANSMITTER MISTRAL SE07 ACRYLIC

The new MISTRAL wireless transmitters with LED function control are compatible with all wireless chimes in the MISTRAL, ECHO and CALIMA series. Suitable for indoor and outdoor use (IP67). Each button comes with four design covers in black, stainless steel, brass and copper. Ideal for retrofitting.

- 1** MISTRAL SE07 Q AP WS • Article 43831
- 2** MISTRAL SE07 Q AP SI • Article 43832
- 3** MISTRAL SE07 Q AP SW • Article 43833



Technical data

- LED function control
- Frequency: 868.35 MHz (fulfils the current RED 2014/53/EU radio standard)
- Range: 200 m in open field
- Power supply: 3 V lithium battery integrated
- Operating temperature: -15 °C to 50 °C
- Protection class IP67, suitable for indoor and outdoor use
- Dimensions: 90 x 90 x 23 mm, Installation depth: 18 mm



SURFACE / FLUSH-MOUNTED RADIO TRANSMITTER ROUND COVER

- 1** MISTRAL SE07 R AP/UP WS • Article 43448
- 2** MISTRAL SE07 R AP/UP SW • Article 43828



SURFACE / FLUSH-MOUNTED RADIO TRANSMITTER SQUARE COVER

- 1** MISTRAL SE07 Q AP/UP WS • Article 43449
- 2** MISTRAL SE07 Q AP/UP SW • Article 43829

Scan and listen
to all doorbell melodies.



Grothe GmbH

Löhestraße 22, D-53773 Hennef

Fon: +49 (0)2242 8890 -0

Fax: +49 (0)2242 8890 -36

info@grothe.de • www.grothe.de

Grothe GmbH

Service-Hotline

Fon: +49 (0)2242 8890 -56

Fax: +49 (0)2242 8890 -37

service@grothe.de

Adobe Bilddatenbank Copyright: © kumnak,
© Rawpixel, © Ilya Andreev, © kosmos111, © Polarpix,
© freshidea, © gudrun.

Das Copyright der verwendeten Logos & Bilder liegt
bei den einzelnen Firmen oder Rechteinhabern.